

MANIFEST v20

7

Magnitude SEVEN 2007





Executive Director

Jason Franz

Board of Directors

Katherine Dintenfass

Jason Franz

Elizabeth Kauffman

Brigid O'Kane

Andy Schaub

Associate Directors

Kristin Cullen

Kevin Muentz

Junior Board

Trevor Ponder

Jeffrey Salter

Interns

Lynda Camp

Kate Holterhoff

Karina Meza

Amanda Nurre

Mission Statement:

Manifest enhances the role of art and design in society by cultivating and focusing the transformative power of creativity in the visual arts. Manifest benefits people in the global and local community, including professionals, students, and the public, by creating quality-centered experiences focused on contemporary visual arts and related activities in the context of creative exploration.

MANIFEST

vol 20

MANIFEST is a 501(c)(3) non-profit organization

MANIFEST VOLUME TWENTY

© 2007 MANIFEST PRESS

All rights reserved. No part of this publication may be reproduced in any way without written permission from the publisher. All rights in each work of art reproduced herein are retained by the artist.

Manifest Creative Research Gallery and Drawing Center
2727 Woodburn Avenue, P.O. Box 6218, Cincinnati, OH 45206
(513) 861-3638

First Printing - May 2007, edition of 90
Designed by Jason Franz
Printed by PrintPelican.com

Cover image by Anna Kipervaser



Support provided by:





MANIFEST

CREATIVE RESEARCH GALLERY
AND DRAWING CENTER

June 8 - July 6

3rd Annual


Magnitude SEVEN

Natalya Aikens
Rebeca Alvarado
Julie Anderson
Samantha DiRosa
Susan Ewing
Kim Flora
Nathaniel Fowles
Sarah Harvey
Angela Katona-Batchelor
Sun Kyong Kim
Anna Kipervaser
Ron Kroutel
Matt Liston
Richard Lusчек
Julie Mader-Meersman

Jillian Moore
Brent Payne
Mary Penn
Jon Radermacher
Alex Roulette
Christian Routh
Amy Rublaitus
Octavia Sharp
Taylor Stephenson
Isaac Sullivan
John Tallman
Tina Tammaro
Rob Thompson
Paul Vogeler
Ruth Wartman

co-curated by Jason Franz and Jeffrey Salter





It's likely that most artists, art historians, collectors, and connoisseurs will tell you that their first, intuitive considerations of a work are formal ones, and that in addition to color, line, and shape, size is integral to forming the character of an object and its relationship to a viewer. Some will express a preference for large works of art, extolling a Rothko or Diebenkorn with mentions of drama and sublimity, an ineffable feeling of sharing physical space with a work, of being inside it. And, certainly, works executed on a large scale can have the effect of a spectacle, overwhelming a viewer and affording a measure of intimacy that is as humbling as it is captivating.

But larger works can sometimes proscribe the intimacy of closeness. And striking audiences with the formidability of a canvas, grandiosity can miss in achieving what seems to be the essence of a viewer's experience – to not only look at a work, but into it with a purpose of true discovery. The works in this season's *Magnitude Seven* invite this kind of discovery as only small works can, insisting on proximity and disclosing themselves in exchange for looking closer.

In the work of Angela Katona-Batchelor, one is afforded the experience of literally unfolding secret forms; in the photographs of Matt Liston viewers are met with stark skylscapes to be investigated for details of stippled clouds and stainless architectures. Elsewhere, in works such as those by Amy Rublaitus and Brent Payne closer inspection yields an understanding of facture, calling attention to rich textures and retiform patterns of hurried lines. In these and in all of the works selected for this exhibition, there is a sense that, as viewers, we are being called to look into every detail of these diminutive compositions, to see every atomistic mark, to notice all the little vestiges of physicality leading back to the gestures of the creating hand and mind. And so looking closely becomes a discovery not only of the microscopic definition of a work, but also a means to discovering what details reveal the character of its creation—the reflections of its own coming to life.

Encouraging audiences to examine work with deliberate, careful attention echoes Manifest's own mission to highlight the transformative power of creativity in the visual arts, as this juried selection of artwork not only demonstrates outstanding creativity through limitation, but also the capacity for small works to effect a profound change in a viewer's experience.

15(52)

fiber, 5" x 5", 2007

Natalya Aikens

pleasantville, new york



Rebeca Alvarado
raleigh, north carolina



Red Cradle, Bare Feet
oil on board, 6" x 6", 2005

Pinned

oil on canvas, 6" x 4.5", 2007

Julie Anderson
bellbrook, ohio



Samantha DiRosa

pullman, washington

Mourning Lightness (detail)

chromogenic prints, glass, 3.5", 2006



Laughable Loves: Kiss Vessel

bronze, sterling silver, garnets, patina
5.5" x 6.5" x 6", 2005

Susan R. Ewing

oxford, ohio



Kim Flora

Cincinnati, Ohio

New Town Hall

oil, collage and encaustic on panel
5" x 7", 2007



Vatican 1

oil, collage and encaustic on panel
5.25" x 6", 2007



The Royals

oil, collage and encaustic on panel
7" x 5", 2007



Study for Everything Lay Still

oil on canvas

3" x 4", 2007

Nathaniel Fowles

surrey, united kingdom



Sarah Harvey

London, United Kingdom



Monster

oil on canvas, 6" x 6", 2007

The Body Paradox #10

hand-colored etching, resin, transparency,
waxed paper, .375" x 4.25" dia., 2007

(#24 inset)

Angela Katona-Batchelor

boise, idaho



The Body Paradox #12

hand-colored etching, resin, transparency,
waxed paper, petri dish, .5" x 3.5" dia., 2007



Triad 02

sterling silver, 5.5" x 5" x 2.5, 2007

Sun Kyoung Kim

champaign, illinois





Finger 02

sterling silver, resin
2" x 2" x 2", 2006

Bedouin Fogcrow

oil on panel, 6" x 6" x 2", 2007

Anna Kipervaser

chicago, illinois





Bedouin Ibis
oil on panel, 6" x 6" x 2", 2007

Palestinian Sunbird

oil on panel, 6" x 6" x 2", 2007





Egyptian Plover
oil on panel, 6" x 6" x 2", 2007

Three Ducts

oil on panel, 3.75" x 5", 2004

Ron Kroutel

athens, ohio



Richard Luschek
Cincinnati, Ohio



Tonka Toy
oil on panel, 4" x 6", 2007

Potrero #20

digital photograph, 3.5" x 4", 2007

Matt Liston

san francisco, california



Potrero #21
digital photograph, 4" x 4.5", 2007



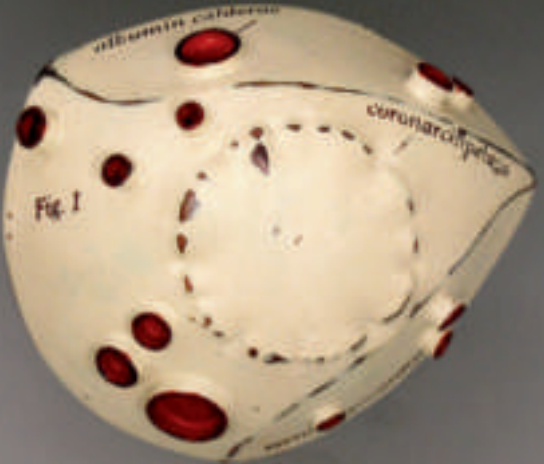
Oxytocin Good - mixed media flap book
paper ephemera, acrylic, colored pencil,
veneer, wood, 2.8" x 1.8" x .75", 2006

Julie Mader-Meersman
cincinnati, ohio



Jillian Moore

Iowa city, Iowa



—Old

copper, paint, ink, nickel-silver
3" x 3" x 2", 2007

Symbogillis

copper, paint, ink nickel-silver

3" x 3.5" x 2", 2007



Petra

copper, sterling silver, aquamarine, opal, agate,
gold leaf, paint, 3" x 3.5" x 2", 2007



Blue Jeans

oil on muslin, 6" x 4", 2006

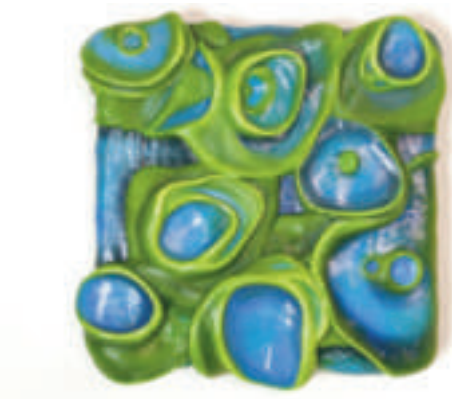
Brent Payne
oxford, ohio



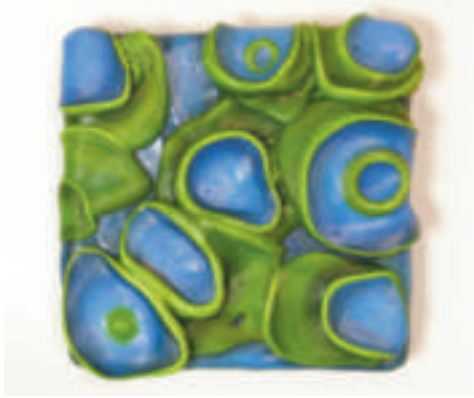
Mary Penn

ann arbor, michigan

Hollows & Pools
oil on plaster on panel, 7" x 7" x 1", 2007



The Three Pools
oil on plaster on panel
6.75" x 7" x 1.25", 2007



Concentric Growth: Green

oil on plaster on panel

5.5" x 5.5" x 1.25", 2006



Shakers (Consumption Series)
plastic, sterling silver, stainless steel
3.75" x 3" x 3" ea., 2007

Jon Radermacher
sewikley, pennsylvania



Alex Roulette

baltimore, maryland



Side to Side

oil on panel, 7" x 7", 2007

Untitled - Eraser

graphite on paper, 4.5" x 5", 2007

Christian Routh

rocky point, new york



Untitled - A Picture
graphite on paper, 7" x 6.75", 2007



Untitled - Paint Chips

graphite on paper, 7" x 6.75", 2007



Octavia Sharp

taylor, south carolina

Mausoleum #2, Forest Hill Cemetery, TN

photography, 5" x 5", 2000



Street View

graphite, conte and watercolor on paper
5" x 7", 2006

Amy Rublaitus
toledo, ohio



The Migration

watercolor and prismacolor on paper
5" x 7", 2006



Maria's Torso

oil on canvas, 5" x 4", 2007

Taylor Stephenson
burlington, kentucky



Isaac Sullivan

Iowa city, Iowa

Landscape

gelatin silver print, 4" x 2.6", 2006



Untitled (1)

acrylic on wood, 4" x 4.5" x .75", 2007

John Tallman

chattanooga, tennessee



Untitled (2)
acrylic on wood, 4.5" x 4.5" x .75", 2007



Marianne

oil on panel, 5" x 5", 2006

Tina Tammaro
cincinnati, ohio



Rob Thompson
columbus, ohio

Untitled
oil on cardboard, 3" x 2.75" x .75", 2006

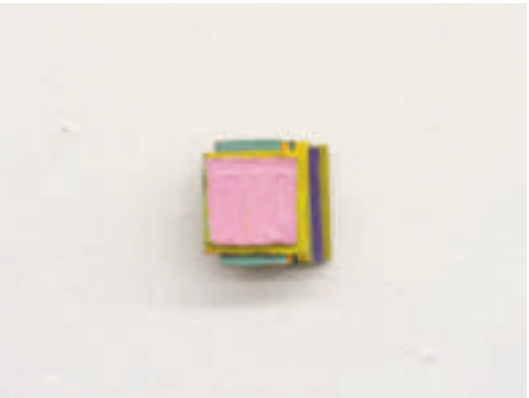


Untitled

oil on cardboard, 3.25" x 3.5" x 1.7 5", 2007



Untitled
oil on canvas, 2.6" x 2.75" x 1.25", 2006



O - A

collage, 6.75" x 4.75", 2006

Ruth Wartman
cincinnati, ohio



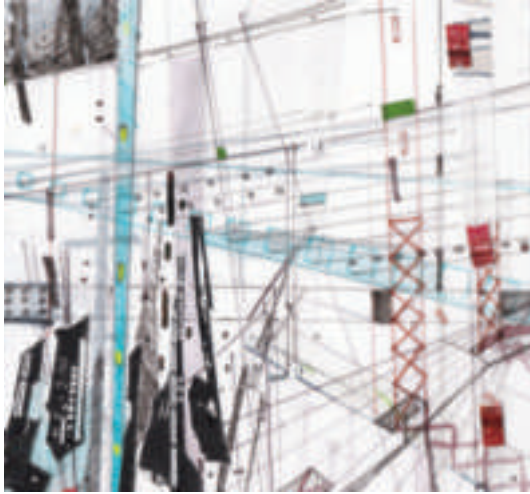
Wire 15

collage, 6.75" x 4.75", 2006



A Notion of Monument
ink, graphite and acrylic on mylar
5" x 5", 2007

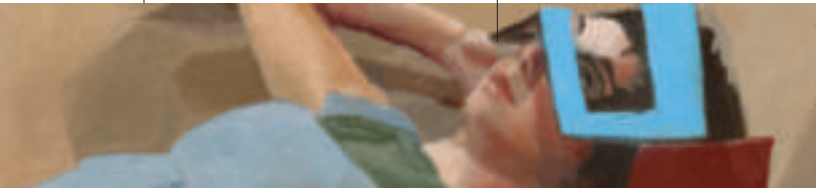
Paul Vogeler
brooklyn, new york



To its third annual small works exhibition Manifest received 350 entries from 143 artists in 26 states and the UK. These were passed through a 5 person jury and subsequent curatorial process. The resulting exhibit presents 50 works by 30 artists from California, Idaho, Illinois, Iowa, Kentucky, Maryland, Michigan, New York, North Carolina, Ohio, Pennsylvania, South Carolina, Tennessee, Washington, Washington D.C., and the United Kingdom.

670 works of art have been submitted to Manifest's *Magnitude SEVEN* since June 2005. Including this third installment of the annual exhibit, 112 works by a total of seventy three artists from all over the U.S. and beyond have been exhibited in this project.







MANIFEST

CREATIVE RESEARCH GALLERY AND DRAWING CENTER

2727 woodburn avenue cincinnati, ohio 45206
513 861 3638
www.manifestgallery.org